

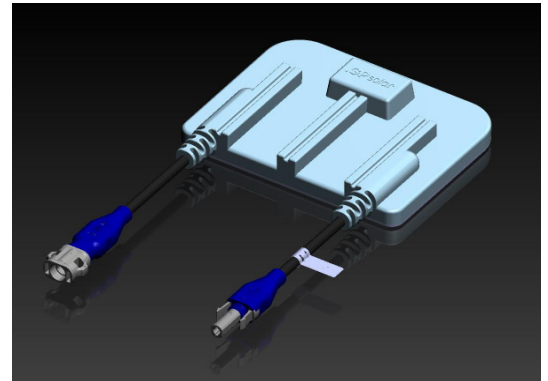
## GP M-CONNECT

New Junction Box Concept

### Situation

Until now, the weakest aspect of standard modules has been the electrical connection between the strings and the junction box. Avoid of any thermal contact, process stability during the lamination process, secure and robust circuitry, and simplified automation are the outstanding features of GP Solar's newly designed GP M-CONNECT junction box. It features innovative connection technology and consists of a connection matrix and a junction box. The new connection technology is designed both for fully automatic and semiautomatic production lines.

The use of proven module components ensures additional security. A patented flat unit has connection contacts for both in-line quality control and non-thermal contact of the junction box. The contacts are not connected using the standard thermal contact method, but are instead fixed in place with a spring-loaded clamping device ensuring long-term stability. The GP M-CONNECT device makes wiring and junction box mounting a snap and drastically cuts numerous production steps, manual handling, and automation expenses in the module production process.

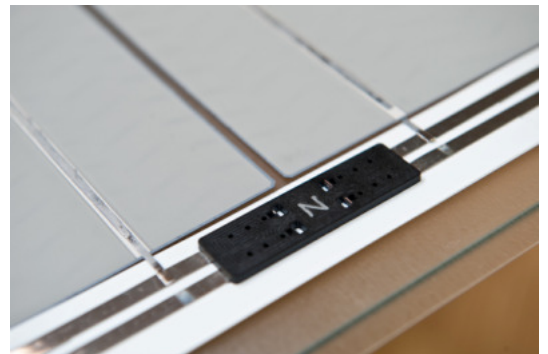


### Description

The GP M-CONNECT junction box is distributed within the framework of GP Solar/centrotherm pv turnkey projects or under licensing agreements to module manufacturers

### Advantages

- No needing of a thermal processing during contacting
- High process stability
- Easy for automation
- Suitability for higher current
- Improved heat distribution
- Overvoltage protector diode
- Facilitated inline quality control





CONSULTING



CELL TECH



MODULE TECH



INSPECT

# .GPsolar

centrotherm photovoltaics group

